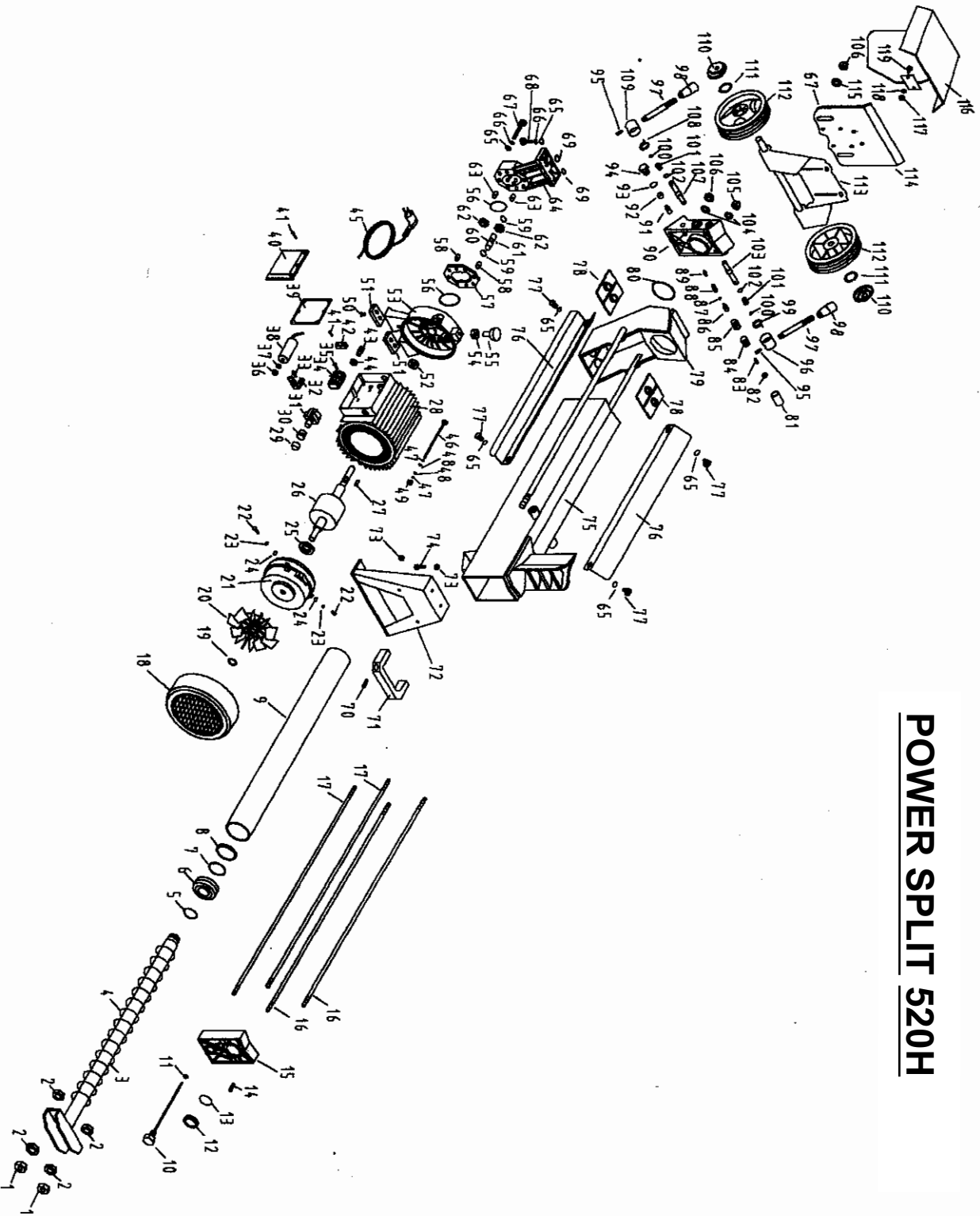


Power Split 520

POWER SPLIT 520H



Power Split 520

Vänligen lägg till 67 framför artikelnummret

Please add 67 in front of the partnumber

Spare part list

No.	Description	Amount	No.	Description	Amount
B1	Hex nut M14	2	B43	Wire clamp bushing	1
B2	Hex nut (thin) M14	4	B44	Wire clamp nut	1
B5TB3	Piston Ram	1	B45	Cable with plug	1
B5TB4	Spring	1	B46	Engine bolt M8	3
B5	O-Ring oil seal	1	B47	Spring washer 8mm	3
B6	Piston	1	B48	Flat washer 8mm	3
B7	O-Ring oil seal	1	B49	Nut M8	3
B8	Square piston ring	1	B50	Cross head screw M6x8	4
B5TB9	Cylinder body	1	B51	Engine rubber foot	2
B5TB10	Dip stick	1	B52	Oil seal	1
B11	O-ring oil seal	1	B53	Engine cover – front	1
B12	Teflon seal ring	1	B54	Nut M8	1
B13	O-Ring oil seal	1	B55	Screw 8mm	1
B14	Bleed screw M3x10	1	B56	O-Ring oil seal	2
B15	Oil cylinder cover end	1	B57	Gear housing	1
B5TB16	Two head bolt	2	B58	Round pin 8x25mm	2
B5TB17	Long two head bolt	2	B59	Spindle circlip	2
B18	Engine fan cover	1	B60	Gear spindle	1
B19	Spindle circlip	1	B61	Rolling ball	1
B20	Flying fanl	1	B62	Gear	2
B21	Engine cover – inner	1	B63	Oil pump sleeve	2
B22	Cross head screw M4x6	3	B64	Oil pump cover	1
B23	Spring washer	3	B65	Flat washer 8mm	13
B24	Flat washer	3	B66	Spring washer 8mm	9
B25	Bearing	1	B67	Bolt M8x55	6
B26	Rotator	1	B68	Bolt M8x30	3
B27	Rolling needle	1	B69	O-Ring oil seal	2
B28	Stator	1	B70	CR head screw M6x20	2
B29	Switch anti-dust cover	1	B71	Carry handle	1
B30	Switch	1	B72	Supporting leg	1
B31	Switch base	1	B73	Nut M6	4
B32	Capacitor support	1	B74	Bolt M6x14	2
B33	Crosshead screw M4x12	2	B5TB75	Main frame	1
B34	Connection pole	1	B5TB76	Log guiding plate	2
B35	Cross head screw M4x8	2	B77	Bolt M8x10	4
B36	Nut M8	1	B78	Plastic sleeve plate	2
B37	Locking washer	1	B5TB79	Log pusher assembly	1
B38	Capacitor	1	B80	O-Ring oil seal	1
B39	Anti dust rubber seal	1	B81	Protection cover	1
B40	Capacitor box cover	1	B82	Nut M6	1
B41	Cross head screw	8	B83	Fixing screw M6x18	1
B42	Wire clamp	1	B84	Fluid screw	1

Power Split 520

Vänligen lägg till 67 framför artikelnummret

Please add 67 infront of the partnumber

No.	Description	Amount
B85	Fluid nut	1
B86	Guiding rod	1
B87	O-Ring oil seal	1
B88	Spring	1
B89	Fluid valve cylinder	1
B90	Oil cylinder cover - Front	1
B91	Valve housing	1
B92	Valve housing screw	1
B93	O-Ring oil seal	1
B94	Screw lock	1
B95	Fixing screw M8x10	1
B96	Handle base	1
B97	Handle bar	1
B98	Handle knob	1
B99	Spring	1
B100	O-Ring oil seal	1
B101	Nut sleeve	1
B102	O-Ring oil seal	2
B103	Rotate valve cylinder	1
B104	Copper washer	4
B105	Nut cover assembly	4
B106	Nut M10	2
B107	Valve sleeve	1
B108	Valve sleeve screw lock	1
B109	Screw lock	1
B110	Wheel axle cover	2
B111	Axle circlip	2
B112	Rubber wheel	2
B113	Wheel frame	1
B114	Supporting plate	1
B115	Flat Washer	2
B116	Protection shield	1
B117	Nut	2
B118	Washer	2
B119	Bolt	2
B120	Valve seat	1
290164	Adapter stik 220V m. jordforbindelse	1