

## HUSQVARNA OUTDOOR PRODUCTS ITALIA

<b>PNC</b>	<b>ML</b>	<b>Model</b>	<b>Brand</b>
953900687	01	PROMAC 2200-14 SCHUKO	McCulloch
953900688	01	PROMAC 2200-16 SCHUKO	McCulloch
953900723			
953900728			
953900737			
966856201			
953900724	01	PROMAC E 1900-14 TL	McCulloch
953900727			
953900738			
953900689	01	PROMAC 2200-14 ASSY UK	McCulloch
953900690	01	PROMAC 2200-16 ASSY UK	McCulloch
953900692	01	PROMAC 2200-14 CH	McCulloch
953900796	01	PROMAC 2200-16 CH	McCulloch

Number of Pages 1 of 5

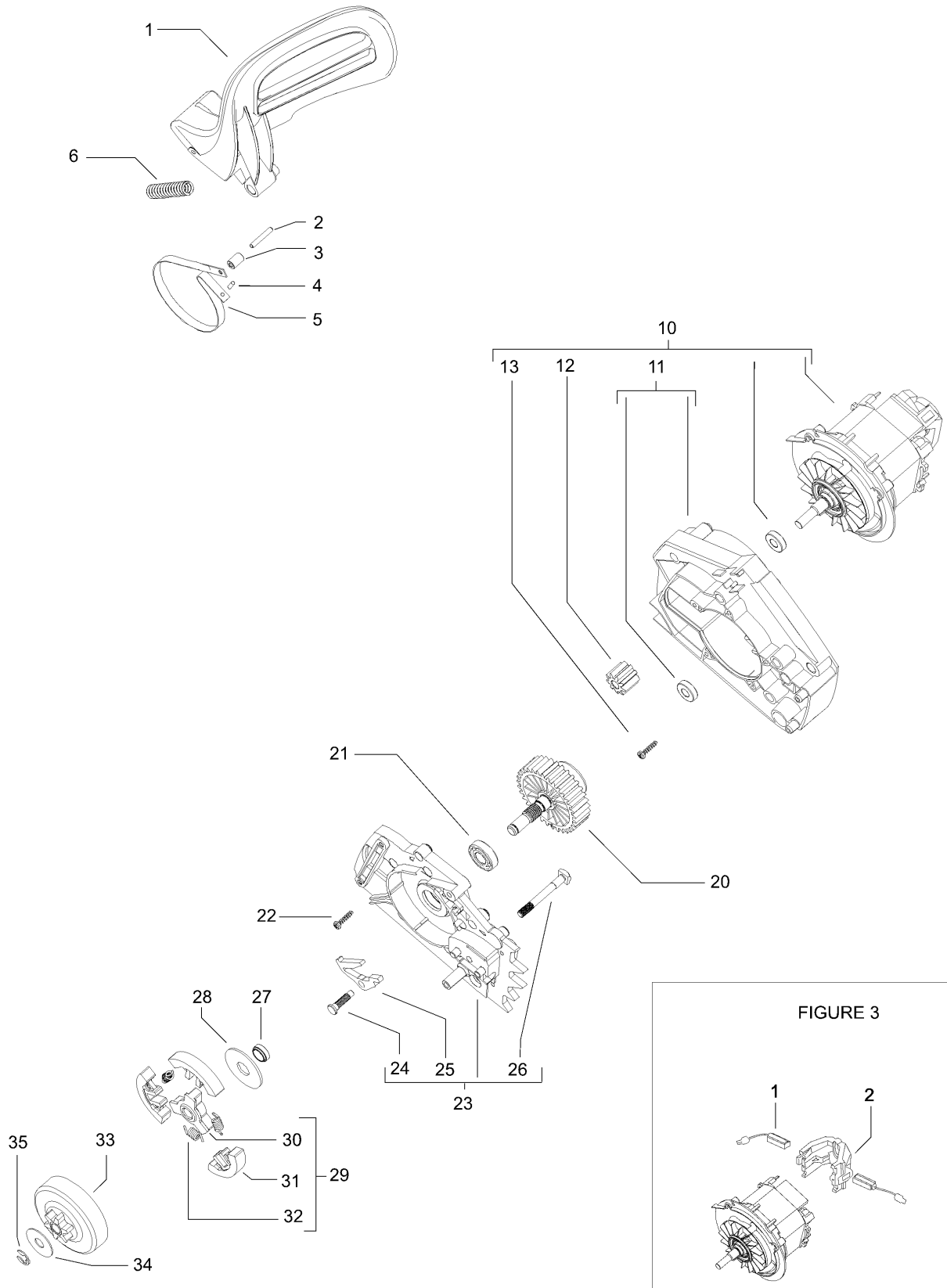
<b>Factory:</b>	<b>IIQ - Valmadrera</b>	<b>Product Group:</b>	<b>OP 93</b>
<b>Publication Number:</b>	<b>MIPL2006_V030000002</b>	<b>Petrol Portable</b>	
<b>Publication Date:</b>	<b>14/03/08</b>	<b>Sub Group</b>	<b>9434</b>



Item	PN	Qty	Description
FIGURE 1			
1	538243470	1	cable assy - SCHUKO
	538243582	1	cable assy - UK
	538243580	1	cable assy - CH
2	* 538243522	1	Plug assy - SCHUKO
	538243583	1	Plug assy - UK
	538243581	1	Plug assy - CH
3	538241051	1	cable strain relief
B 4	* 538243579	1	trigger
B 5	* 538242687	1	switch
6	538243474	1	front handle
7	503217520	2	screw 5x20, self threading
8	503218830	1	screw 6x30, self threading
10	538243444	1	left crankcase
11	538243472	1	oil tank assy
12	* 538322199	1	vernay
B 13	538243137	1	oil cap assy
14	* 538235510	1	o-ring
B 15	538225062	1	oil filter
16	538243456	1	oil hose 30cm
B 17	538243453	1	oil pump
18	538240862	1	screw 4x18, self threading
19	538005334	1	oil hose 13,5 cm
20	538240862	3	screw 4x18, self threading
21	538243445	1	right crankcase
22	538240862	7	screw 4x18, self threading
B 23	538243476	1	chain tensioner plate
24	538243477	1	chain cover assy
C 25	* 538243484	1	washer
26	* 538236378	1	seeger
C 27	* 538243483	1	chain tensioner disc
C 28	* 538243482	1	chain tensioner ring
C 29	* 538243866	1	bar locking knob
C 30	* 538005367	2	pin
C 31	* 538243480	1	bar locking disc

A = ALTA ROTAZIONE	A = HIGH MOVING	A = HAUTE DEMANDE	A = GROBE NACHFRAGE
B = MEDIA ROTAZIONE	B = MEDIUM MOVING	B = MOYENNE DEMANDE	B = MITTELMAESSIGE
C = BASSA ROTAZIONE	C = SLOW MOVING	C = BASSE DEMANDE	C = WENIGE NACHFRAGE
NUOVI CODICI	NEW PARTS	NOUVELLE REFERENCES	NEU CODEX

FIGURE 2



**Item            PN            Qty    Description**

FIGURE 2			
	<b>1</b>	<b>538243460</b>	1 brake lever
	<b>2</b>	<b>538005367</b>	1 brake pin
	<b>3</b>	<b>538243462</b>	1 brake spacer
	<b>4</b>	<b>538229394</b>	1 brake band plug
<b>C</b>	<b>5</b>	<b>538243461</b>	1 brake band
	<b>6</b>	<b>538235076</b>	1 brake spring
<b>C</b>	<b>10</b>	<b>538243447</b>	1 motor
	<b>11</b>	<b>* 538243448</b>	1 gear box
	<b>12</b>	<b>* 538243450</b>	1 gear
	<b>13</b>	<b>* 538240862</b>	3 screw 4x18
<b>B</b>	<b>20</b>	<b>538243451</b>	1 pinion gear
	<b>21</b>	<b>538235914</b>	1 ball bearing
	<b>22</b>	<b>538240862</b>	7 screw 4x18, self threading
<b>B</b>	<b>23</b>	<b>538243457</b>	1 gear box cover
	<b>24</b>	<b>* 538235075</b>	1 brake latch pivot
	<b>25</b>	<b>* 538242367</b>	1 brake latch
	<b>26</b>	<b>* 538241035</b>	1 bar bolt
	<b>27</b>	<b>538243464</b>	1 spacer
	<b>28</b>	<b>538241346</b>	1 dust shield
<b>B</b>	<b>29</b>	<b>538243577</b>	1 clutch assy
	<b>30</b>	<b>* 538242005</b>	1 clutch rotor
	<b>31</b>	<b>* 538227359</b>	3 clutch shoe
	<b>32</b>	<b>* 538243578</b>	3 clutch spring
<b>A</b>	<b>33</b>	<b>538240260</b>	1 clutch drum
	<b>34</b>	<b>538235287</b>	1 washer
	<b>35</b>	<b>538229137</b>	1 seeger

FIGURE 3			
<b>C</b>	<b>1</b>	<b>538048956</b>	2 brushes
<b>C</b>	<b>2</b>	<b>538048957</b>	1 brushes holder

A = ALTA ROTAZIONE	A = HIGH MOVING	A = HAUTE DEMANDE	A = GROBE NACHFRAGE
B = MEDIA ROTAZIONE	B = MEDIUM MOVING	B = MOYENNE DEMANDE	B = MITTELMAESSIGE
C = BASSA ROTAZIONE	C = SLOW MOVING	C = BASSE DEMANDE	C = WENIGE NACHFRAGE
NUOVI CODICI	NEW PARTS	NOUVELLE REFERENCES	NEU CODEX